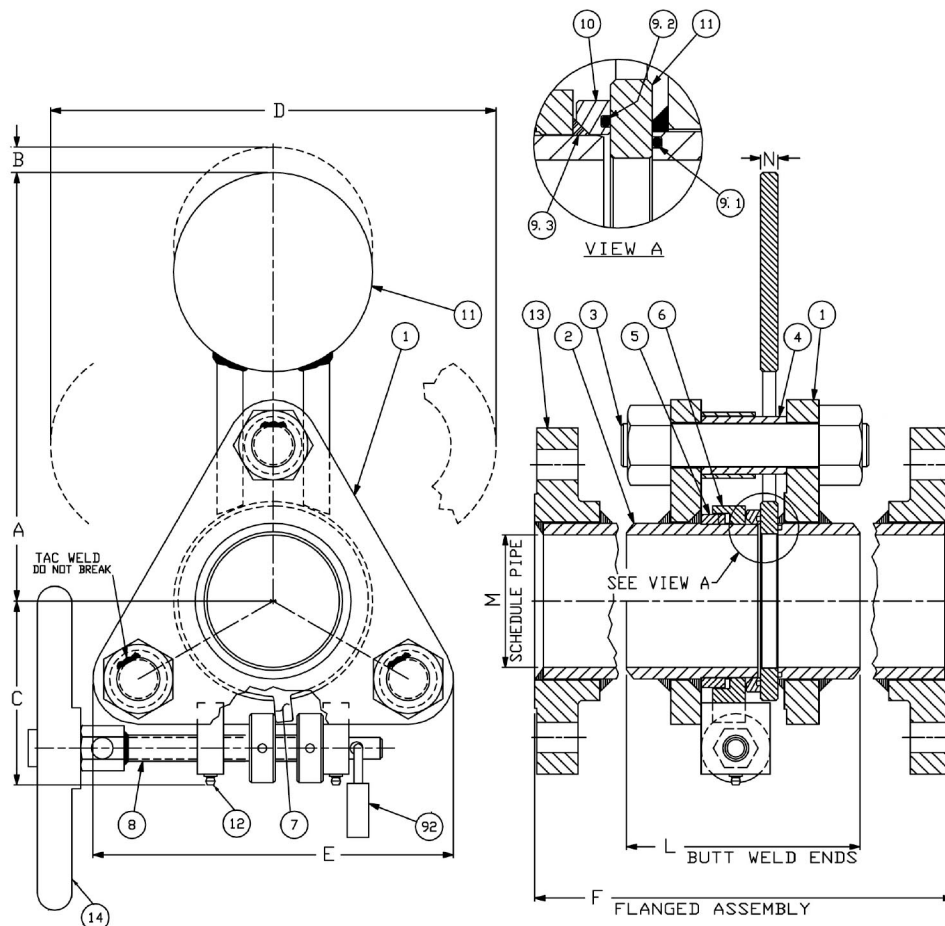


Drawing and Dimension Table for Cam-Set® (ASME 150#)



Cam-Set front view

Cam-Set side view

Nr	Description
1	Body Flange
2	Body Pipe
3	Body Bolts
4	Body Bolt Spacer
5	CAMS
6	Sealing Actuator
7	Actuator Lever
8	Actuator Screw Assembly
9.1	Seal Ring
9.2	Seal Ring
9.3	Seal Ring
10	Seal Carrier
11	Spectacle Plate Assembly
12	Grease Fitting
13	Flange 150 ASME Standard
14	Hand Wheel
92	Lock

Size	mm:	A	B	C	D	E	F	L	M	N
DN 25 / 1"		127	13	64	159	127	178	165	80	13
DN 40 / 1½"		159	16	76	197	152	190	178	80	13
DN 50 / 2"		178	10	83	229	165	203	190	80	13
DN 80 / 3"		229	19	102	289	203	222	203	80	13
DN 100 / 4"		279	19	127	356	235	248	229	80	13
DN 125 / 5"		349	25	140	438	298	292	267	80	16
DN 150 / 6"		394	25	171	495	337	292	267	80	16
DN 200 / 8"		502	41	200	635	400	317	n/a	80	16
DN 250 / 10"		654	44	229	816	483	356	330	60	16
DN 300 / 12"		762	57	279	953	591	381	356	80S	22
DN 350 / 14"		800	57	279	1003	625	406	381	xH	22
DN 400 / 16"		908	89	330	1137	711	432	406	60	22
DN 450 / 18"		975	76	368	1232	813	686	660	60	25
DN 500 / 20"		1111	73	413	1403	857	711	686	60	25
DN 600 / 24"		1245	83	470	1581	978	838	813	60	38

All dimensions above are in mm for ASME class 150# unless otherwise stated. Alternative Cam-Set models are available on request.